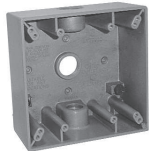


# Weatherproof Outlet Boxes

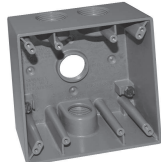
## TWO GANG – 30.5 CUBIC INCH CAPACITY

2" DEEP, ALL TWO GANG BOXES HAVE 2 MOUNTING LUGS AS STANDARD  
CAST ALUMINUM – UL LISTED FOR WET LOCATIONS

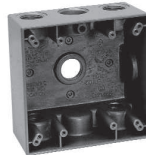
CP



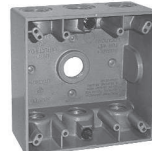
TP7086 – TP7090



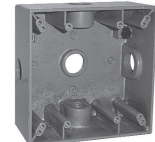
TP7094, TP7098



TP7102, TP7106



TP7110, TP7114



TP7118, TP7122

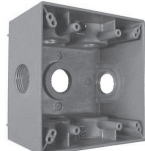
Cat. #	Description	Unit Qty.	Color	Wt. Lbs. Per 100
TP7086	3 – 1/2" Holes	10	Gray	83.3
TP7087	3 – 1/2" Holes	10	White	83.3
TP7088	3 – 1/2" Holes	10	Bronze	83.3
TP7090	3 – 3/4" Holes	10	Gray	83.3
TP7094	4 – 1/2" Holes	10	Gray	83.3
TP7098	4 – 3/4" Holes	10	Gray	83.3
TP7102	5 – 1/2" Holes	10	Gray	83.3
TP7106	5 – 3/4" Holes	10	Gray	83.3
TP7110	7 – 1/2" Holes	10	Gray	83.3
TP7114	7 – 3/4" Holes	10	Gray	83.3
TP7118	5 – 1/2" Holes	10	Gray	83.3
TP7122	5 – 3/4" Holes	10	Gray	83.3

## TWO AND THREE GANG DEEP

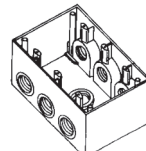
2 5/8" DEEP, ALL BOXES ARE STANDARD WITH MOUNTING LUGS  
CAST ALUMINUM – UL LISTED FOR WET LOCATIONS



TP7126, TP7130, TP7134



TP7137, TP7138, TP7142



TP7143, TP7144

Cat. #	Description	Color	Unit Qty.	Capacity Cu. In.	Wt. Lbs. Per 100
<b>TWO GANG DEEP WEATHERPROOF OUTLET BOXES</b>					
TP7126	5 – 1/2" Holes	Gray	6	37	140
TP7130	5 – 3/4" Holes	Gray	6	37	140
TP7134	5 – 1" Holes	Gray	6	37	140
TP7137	7 – 1/2" Holes	Gray	6	37	140
TP7138	7 – 3/4" Holes	Gray	6	37	140
TP7142	7 – 1" Holes	Gray	6	37	140
<b>THREE GANG DEEP WEATHERPROOF OUTLET BOXES</b>					
TP7143	7 – 3/4" Holes	Gray	5	59	159
TP7144	7 – 1" Holes	Gray	5	59	159

# Weatherproof Outlet Boxes

## Dimensions

In Inches:

Single Gang Boxes	Single Gang Deep Boxes	Two Gang Boxes	Two Gang Deep Boxes
TP7010 – TP7071	TP7074 – TP7082	TP7086 – TP7122	TP7126 – TP7142

CP

## ONE & TWO GANG WEATHERPROOF EXTENSIONS

1" DEEP, DIE-CAST ALUMINUM EXTENSION RING  
GASKET AND MOUNTING SCREWS INCLUDED WITH COVER  
UL LISTED FOR WET LOCATIONS



TP7120



TP7123

Cat. #	Description	Color	Unit Qty.	Capacity Cu. In.	Wt. Lbs. Per 100
TP7120	Single Gang	Gray	25	9	27.2
TP7123	Two Gang	Gray	10	10	27.2

## EXTENSION ADAPTER

DIE-CAST ALUMINUM, UL LISTED FOR WET LOCATIONS 3 CLOSURE PLUGS,  
MOUNTING SCREW AND GASKET INCLUDED WITH COVER



Cat. #	Description	Color	Unit Qty.	Capacity Cu. In.	Wt. Lbs. Per 100
TP7173	4 – 1/2" Holes	Gray	25	9.5	23.6
TP7174	4 – 3/4" Holes	Gray	25	13.0	27.8

## Crouse-Hinds

by E.T.N